

Autoclave for dispersing (purging) air bubble LCD

YYA-750/900-1200

Model	
750	900
Operating Temperature Range	
Max. 70deg.C	
Pressure-Resistant	
0.9Mpa	
Inner Dimension	
φ750×850mm	φ900×900mm

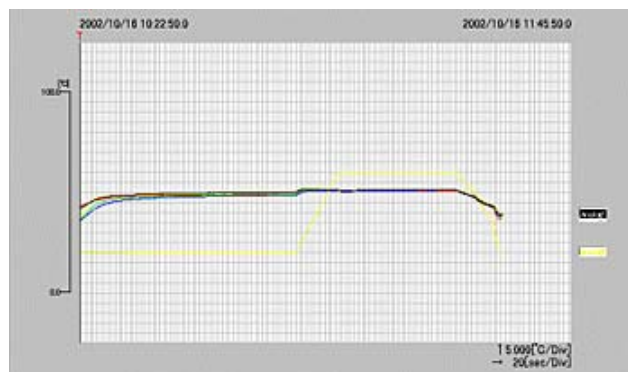
Equipment Summary

This autoclave disperses(purges) air bubbles in cell panels after polarizer aligning process in LCD product line. The system is Bach-type autoclave. Operation conditions such as temperature, air pressure and process time are changeable. The chamber is made of for rust protection.

Feature

- No overshooting by any method operation
- Can get perfect uniformity Full load sample ---+/- 1.5 degree C (15 points temperature measurement)
- Three kinds of method
 1. At first pressure raise, after that Temperature raise
 2. At the same time pressure and Temperature raise
 3. At first Temperature raise, after that Pressure raise
- Can adjustable exhaust speed
- Can adjust ramping temperature
- Special Trolley and Rack available
- Any chamber size is available upon customer's requirement (from 350 up to 1800mm I.D.)
- Also any chamber depth is available upon customer's requirement.

Control Panel



Specifications

Model	YYA-750-1200	YYA-900-1200
■ Drum Chamber		
Inner dimension (Effective inside dimensions)	φ750×1200 L mm	φ900×1200 L mm
Pressure	Pressure-resistant : 0.9 Mpa Hydraulic test pressure : 1.35Mpa	
Temperature range	Max. Operating temperature : 70deg.C	
Temperature uniformity	Less than ±3 deg.C at 50deg.C (with Sample Load)	
■ Door		
Type	Single-sided vertical slide Auto door type	
Opening/Closing system	The vertical slide system in an oil pressure cylinder. Packing pressurization air extrusion.	
■ Control Panel		
Pressurizing system	Controlled with pressure controller, regulators and solenoid valves	
Heating system	Sheath heater with PID control, Side flow method.	
Stirring system	Agitation method by sirocco Fan (Water-Cooling is not required for shaft sealing section) Free-maintenance	
Pressure gauge	Analog pressure gauge with upper limit contact Pressure range : 0 to 1.0MPa Accuracy : ±1%	
Temperature controller	Digital setting, digital indication (PID control)	
Pressure controller	Digital setting, digital indication (ON/OFF control)	
System control	Controlled by Programmable controller (PLC)	
Working hour timer	99hours 59min (arbitrariness set)	
Emergency stop switch	Mushroom type lock switch	
■ Safety		
Safety mechanism (Door opening/closing)	Door indicator lamps (Door position is detected by 1 set of limit switch and 1 set of proximity switch)	
Safety mechanism (Pressure excessive rise)	Upper limit alarm contact of pressure gauge with upper-limit contact is connected , and safety valve blows off pressurized air. (Over pressure lamp lights and buzzer sounds. Heater is turn off and pressurized air is automatically exhausted.)	
Safety mechanism (overheat)	Detected by upper limit alarm output of temperature controller. (Over pressure lamp lights and buzzer sounds. Heater is turn off and pressurized air is automatically exhausted.)	
■ Required Utility		
Power supply	AC200/220/380V, 3-phase 50/60Hz 15 KVA	AC200/220/380V, 3-phase 50/60Hz 15 KVA
External dimensions	1,500(W)×1,700(D)×1,750 (H) mm	1,650(W)×1,700(D)×1,900 (H) mm
Shelf rest step number	Custom made (Trolley and Rack)	
Shelf rest pitch	Custom made	
Weight	Approx. 1200 kg	Approx. 1500 kg